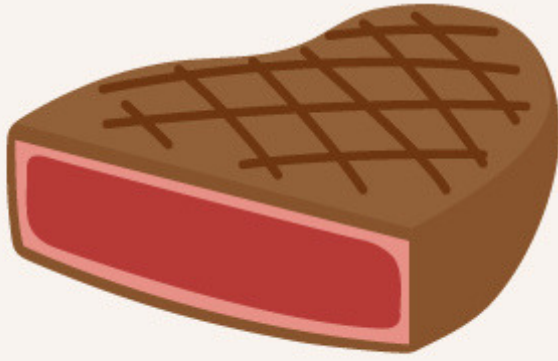


STEAK DONENESS

3/4" STEAK



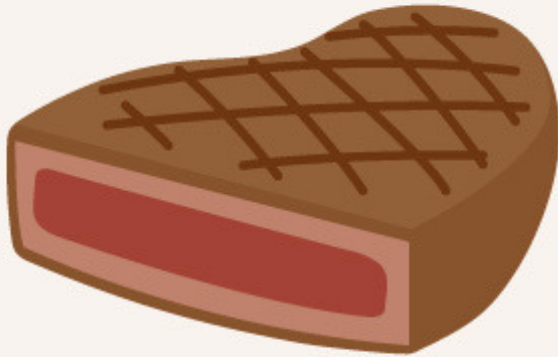
RARE

SEARED AROUND THE EDGES

RED INTERIOR

4 MINUTES SIDE 1

2 MINUTES SIDE 2



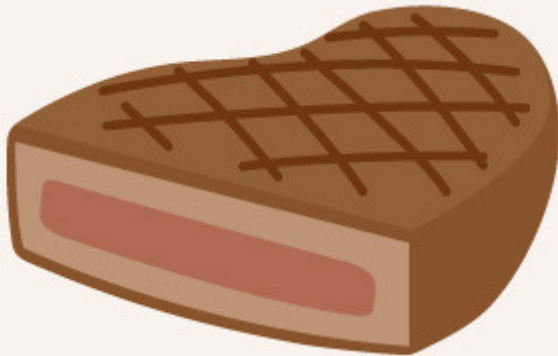
MEDIUM RARE

SEARED OUTSIDE

PINKISH-RED INTERIOR

5 MINUTES SIDE 1

3 MINUTES SIDE 2



MEDIUM

PINK CENTER

SURROUNDED BY BROWN MEAT

6 MINUTES SIDE 1

5 MINUTES SIDE 2



WELL DONE

BROWN COLOR THROUGHOUT

8 MINUTES SIDE 1

7 MINUTES SIDE 2